

2437 MAIN ST SANTA MONICA

FOR LEASE

**CREATIVE OFFICE /
PRODUCTION SPACE**
±7,500 RSF



FOR LEASE

CREATIVE OFFICE / PRODUCTION SPACE

2437 MAIN ST SANTA MONICA CA 90401

DETAILS

AVAILABLE RSF

± 7,500 RSF

RATE

\$5.25 / SF per Mo. / NNN

OCCUPANCY

Immediate

TERM

3-10 Years

PARKING

3/1,000 SF
@ \$150/per space

Creative office / production space with a remarkable Ocean Park location, and abundant on-site underground parking

FEATURES

First time in the market in almost 20 years

An additional 5,000 SF office/production space available on campus

Abundant underground and surface parking on site

Exposed bow-truss ceilings with clerestory central skylight

Remarkable Ocean Park location within walking distance to innumerable amenities along Main St

On-site retailers include Blue Bottle Coffee and Holey Grail Donuts

Next to the beach, and one block away from a Breeze bike-share station

Walkscore breakdown:

97/100 Dining and Drinking

97/100 Groceries

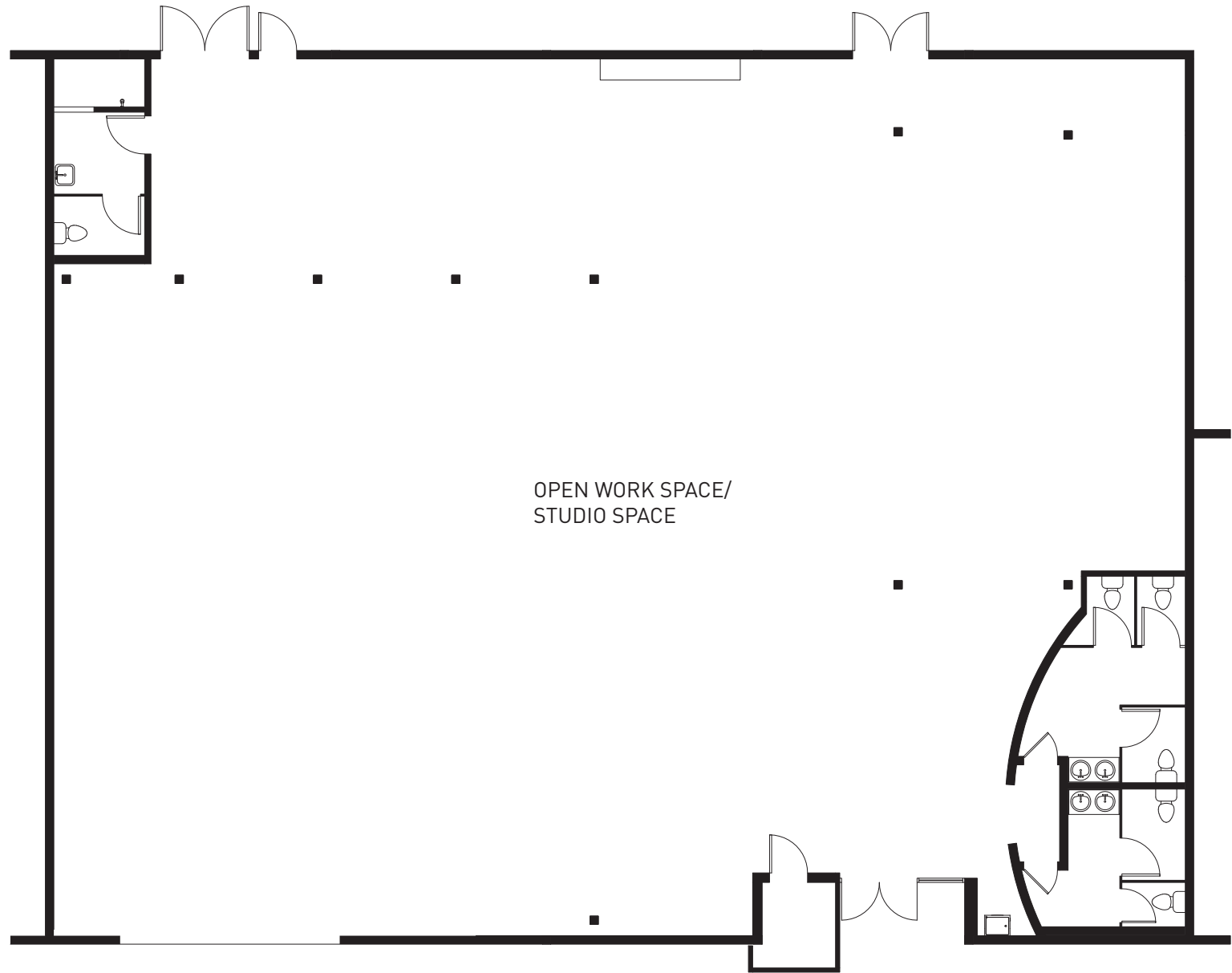
100/100 Shopping

100/100 Parks

96/100 Culture and Entertainment



GROUND FLOOR





FOR LEASE

CREATIVE OFFICE | PRODUCTION SPACE

2437 MAIN ST SANTA MONICA CA 90401

EXTERIOR PHOTOS



FOR LEASE

CREATIVE OFFICE | PRODUCTION SPACE

2437 MAIN ST SANTA MONICA CA 90401

AERIAL PHOTOS



About the neighborhood

Very walkable and bikeable neighborhood with a diverse, high-quality amenity base

Next to the beach

On one of the most active retail strips in Santa Monica

Walkscore breakdown:

- 97/100 Dining and Drinking
- 97/100 Groceries
- 100/100 Shopping
- 100/100 Parks
- 96/100 Culture and Entertainment

4-MIN DRIVE TO 10 FWY
6-MIN BIKE RIDE TO EXPO LINE
96/100 WALKSCORE

