

**1663**  
EUCLID STREET —  
SANTA MONICA, CA



**PRIVATE EUCLID COMPOUND**





# 1663

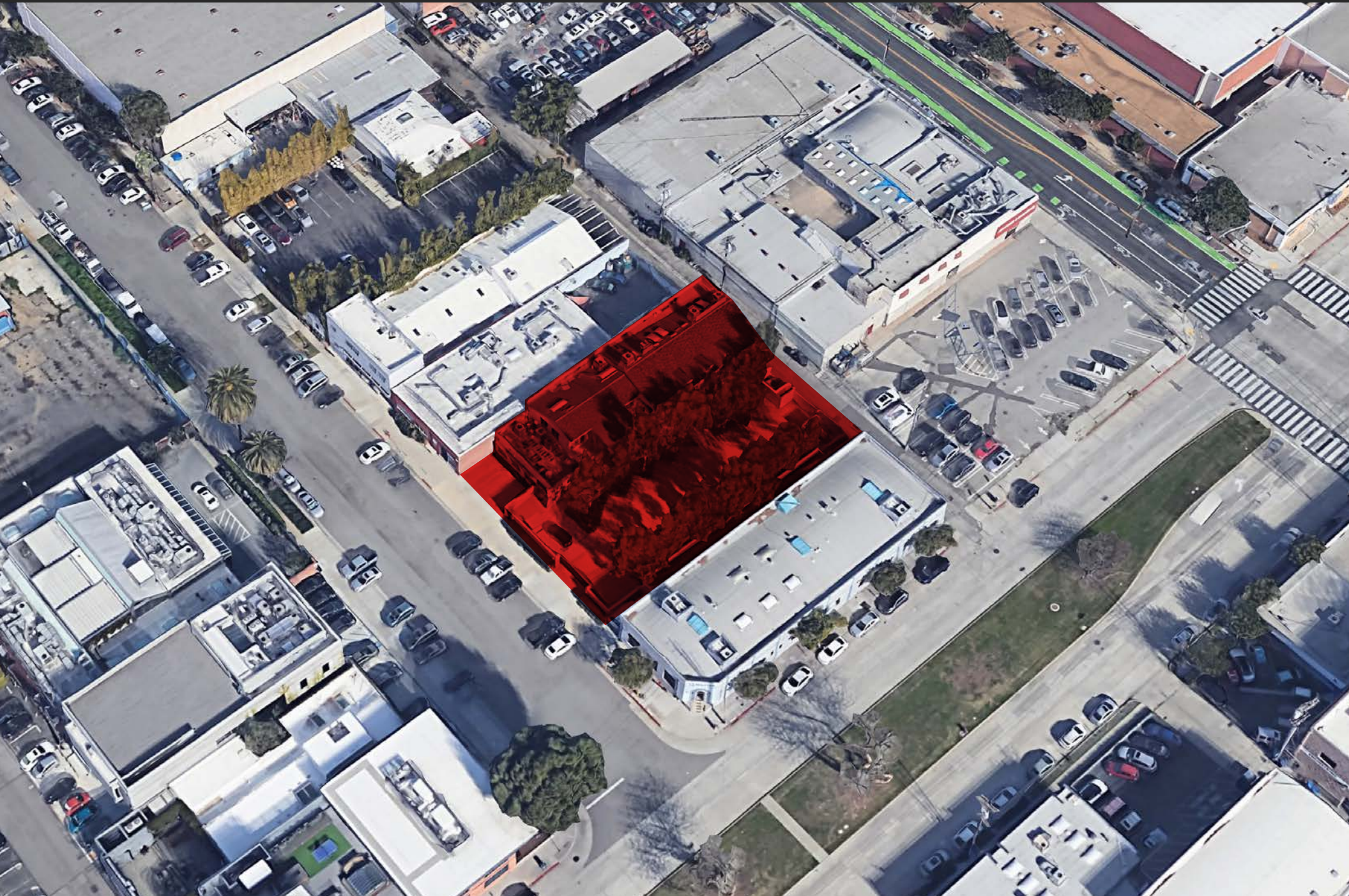
EUCLID STREET

- High Exposed Ceilings
- Hardwood Floors Throughout
- Full Modern Kitchen
- Exclusive Outdoor Patio
- Located in the Heart of the Santa Monica Media District
- Walking Distance from Many Eateries
- Surrounded by High-profile Tenants
- One Block from the 17th Street Expo Station
- Easy access to the 10 Fwy, Olympic Corridor, & West LA / Santa Monica

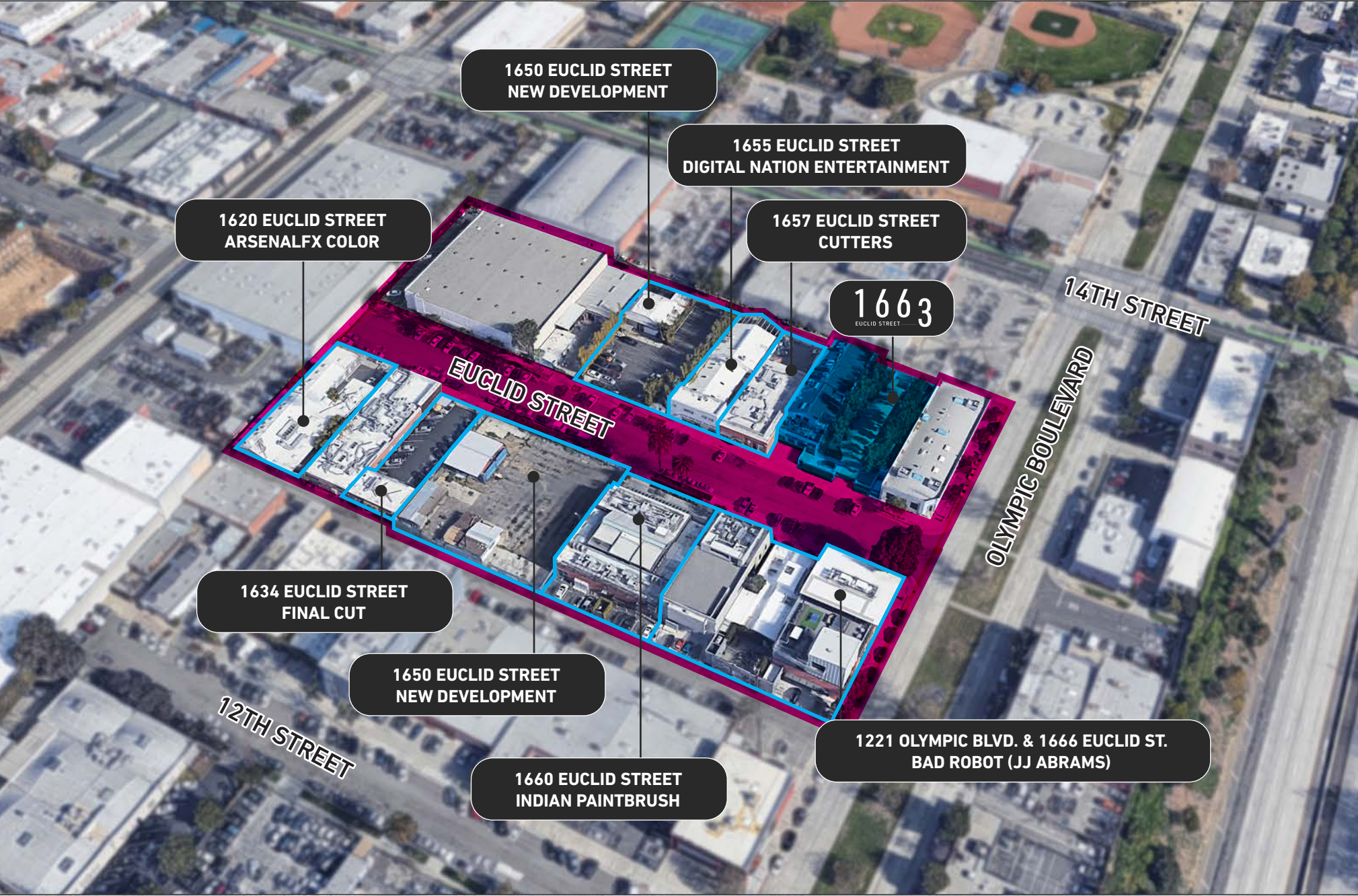
ADDRESS	PREMISES	RENT	TERM	OCCUPANCY	PARKING
1663 Euclid Street Santa Monica, CA 90404	± 8,500 SF	\$6.45/SF, MG	3+ Years	Immediate	18 Car Parking* \$175/Space/Month

\* More possible as tandem and street parking.













**1645 Euclid Street.** [Link to SM ARB Materials.](#) 1645 Euclid is a ground up 3-story tier 2 creative office development, set to span approximately 26,000 SF, with subterranean parking for 90 cars.



**1650 Euclid Street.** [Link to SM ARB Materials.](#) 1650 Euclid is a ground up 3-story creative office building over two levels of sub-grade parking. The proposed building is lifted above the street on a podium and provides 39,380 SF (maximum FAR, Tier II) of floor area, divided over the two wings of the building. Below grade, there will be two levels of parking (approximately 20,000 SF each).



**1221 Olympic & 1666 Euclid (Bad Robot):** This project, spanning ~17,000 SF on the NW Corner of Olympic Blvd and Euclid is home to JJ Abrams Production company, Bad Robot. It was fully redeveloped in 2009 and remains one of the Street's premiere examples of high class design and architecture.



**1660 Euclid Street (Indian PaintBrush):** This project spans approximately 15,000 SF and is located just to the north of JJ Abrams' Bad Robot building. 1660 Euclid is home to the production Company Indian PaintBrush founded by Steven Rales in 2006.









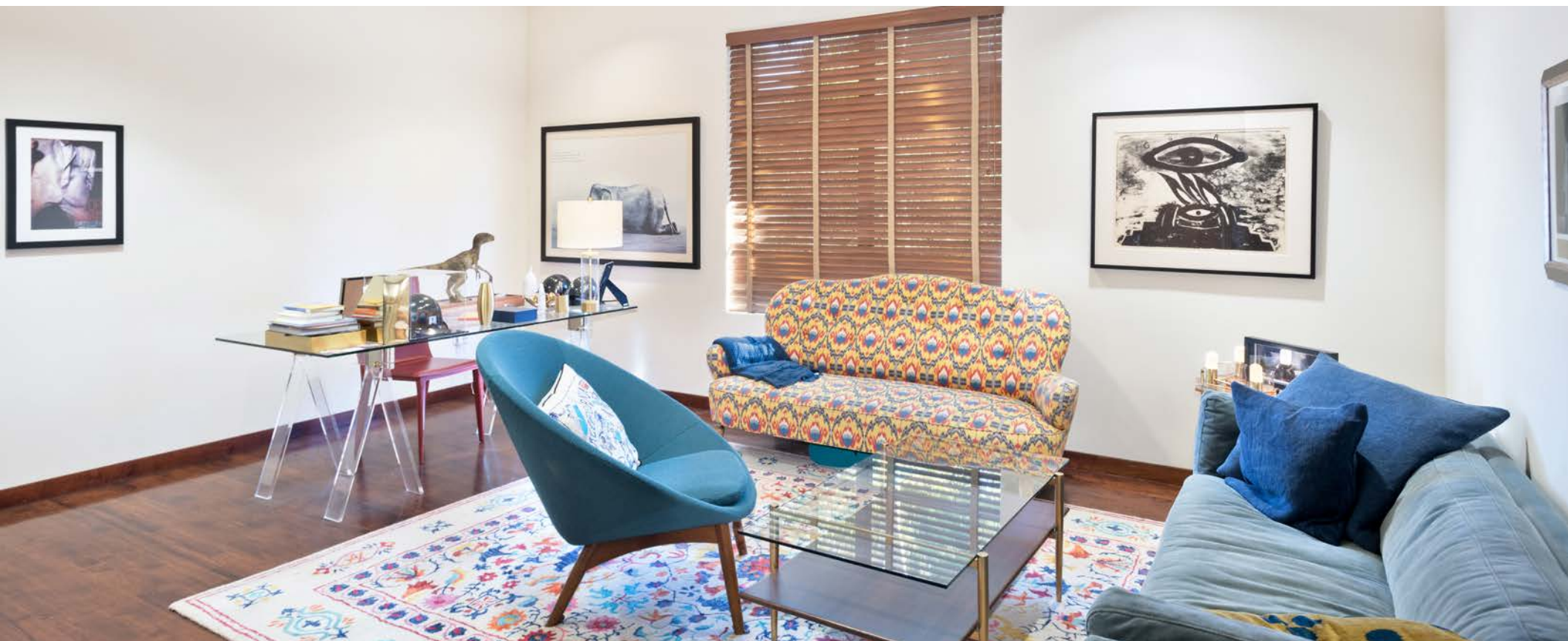








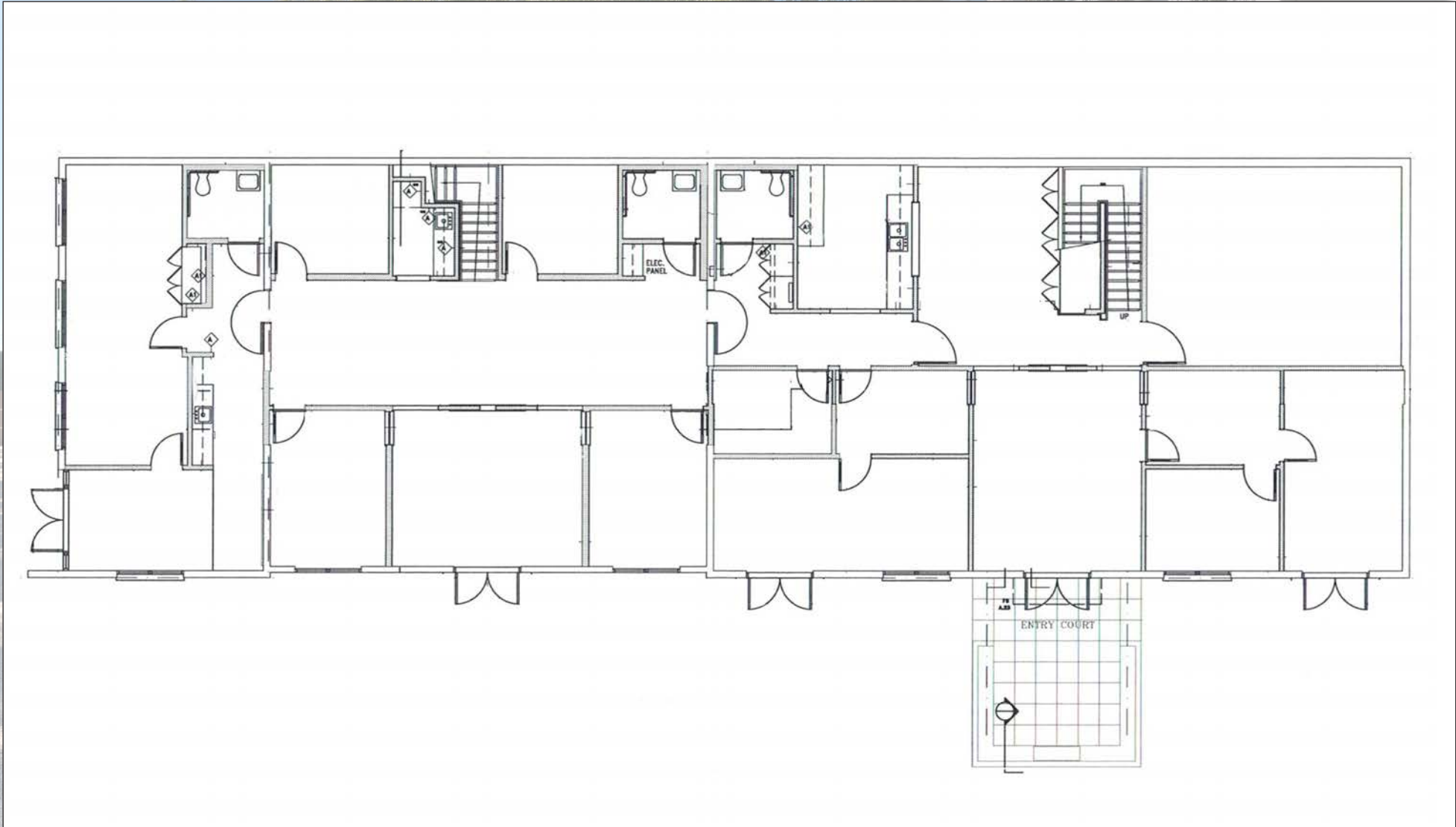




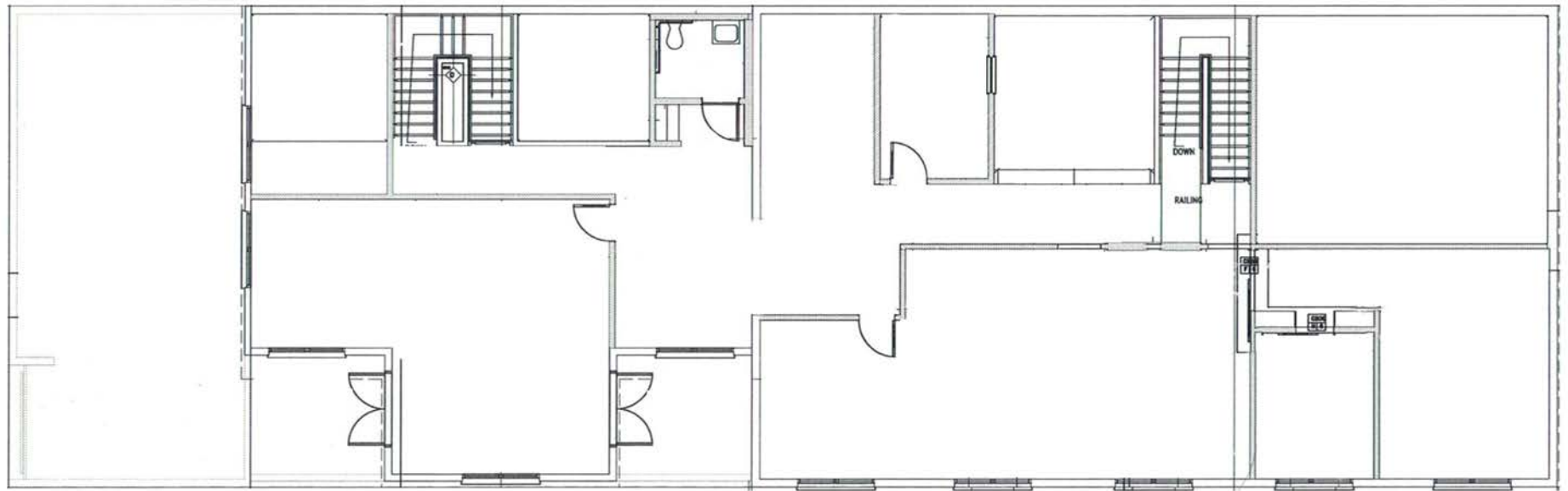














## WEST OLYMPIC CORRIDOR

1663  
EUCLID STREET

Bad Robot  
Indian Paintbrush  
Final Cut  
JBC Music  
Arsenal FX Color  
Digital Nation Entertainment  
Cutters  
Parks Mac Donald  
Planet Blue HQ  
Radical Media  
Threshold Entertainment

## BROADWAY PLACE

General Editorial  
TigerConnect  
Cut + Run  
Cosmo Street Editorial  
Apache

MAD Architects  
Rock Paper Scissors  
Cross Creek Entertainment

## COLORADO CENTER

HULU  
HBO  
Bird  
ShoeDazzle

## PENN FACTORY/PENN STATION

GoodRX  
Kite Pharma  
Redbull North America HQ  
Tala  
Center for Media & Design

## COLORADO CORRIDOR

Viacom  
Lionsgate  
Interscope Records  
Illumination  
Gameshow Network  
Universal Music Group  
Starz Entertainment  
Simple Practice  
Goop  
The Honest Company  
FIGS  
Reddit

## WATER GARDEN

Amazon Studios  
CBS  
AMC Networks  
Oracle

## BERGAMOT STATION

FIG Gallery  
Ikon Limited Fine Art  
Montalba Architects  
Sulkin Studio Architecture

## BERKELEY SM EAST

Blackbear Pictures  
Blue Bonsai  
Jenni Kayne  
Soundbox  
Apogee Electronics  
Cartel  
Yoga Glo



LOCATION OVERVIEW

1663  
EUCLID STREET





## NEARBY AMENITIES

1663  
EUCLID STREET





