

INDU
STRY

CREATIVE OFFICE
±6,520 RSF TO ±13,038 RSF

1658 10TH ST
SANTA MONICA

FOR SUBLEASE



FOR LEASE

CREATIVE OFFICE

1658 10TH ST SANTA MONICA CA 90404

DETAILS

AVAILABLE RSF

±13,038 RSF (Divisible to ±6,520 RSF)

RATE

\$3.75/SF per Mo. MG

TERM

Thru Dec 2024

OCCUPANCY

30 Days

PARKING

\$50/space per mo.

Creative office opportunity

FEATURES

Located in prime Santa Monica neighborhood

Easy accessibility to Pacific Coast Highway

Polished concrete floors

Sky lights/high ceilings

100% air conditioned

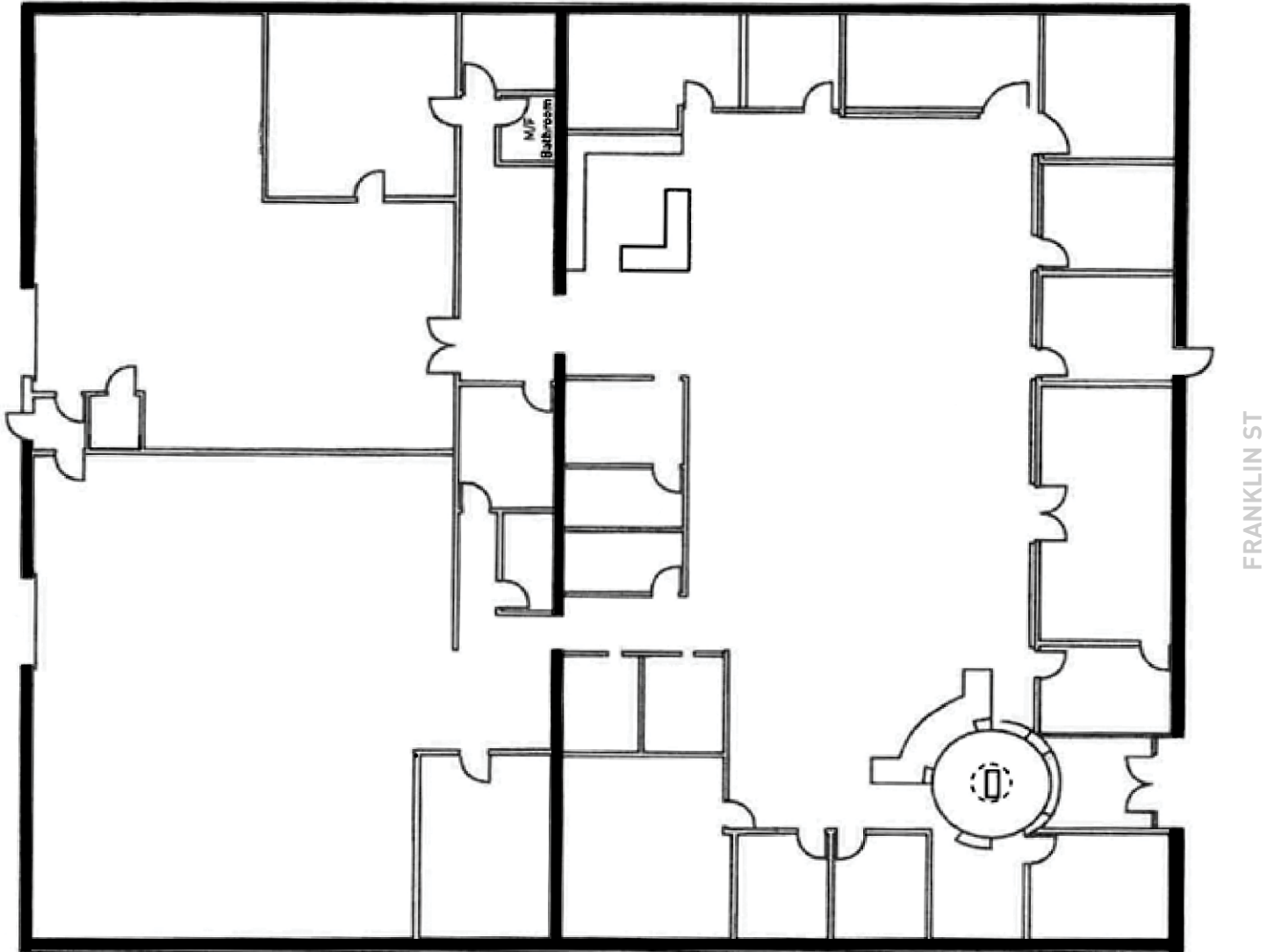
Gated parking structure

Walking distance to Santa Monica expo line station

Less than 3-min drive to Santa Monica Beach



1ST FLOOR
±13,038 RSF
(Divisible to ±6,520 RSF)

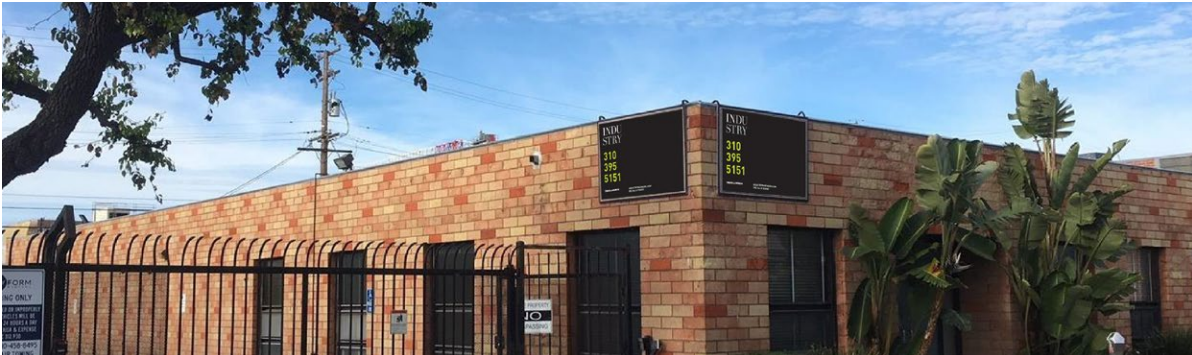


FOR LEASE

CREATIVE OFFICE

1658 10TH ST SANTA MONICA CA 90404

PHOTOS



About the neighborhood

Santa Monica is bordered by Malibu and Venice and is easily accessible from Los Angeles International Airport.

The area represents a culmination of a Southern California beach town combined with the sophistication, cutting-edge culture, and business amenities of a big city.

In recent years, a wave of tech and internet start-up companies have rolled into town, earning Santa Monica the nickname of 'Silicon Beach' and remains one of the top ten most sustainable cities in the United States.

WALKSCORE

87/100 WALKSCORE

LESS THAN 1-MIN DRIVE TO 10 FWY
7-MIN DRIVE TO 405 FWY
25-MIN DRIVE TO LAX

