

# 1417 6TH STREET

SANTA MONICA, CA 90401



FOR LEASE

## FULL FLOOR CREATIVE OFFICE





# FEATURES

- Secure Lobby
- Locked Elevator Access
- Gated Secure Parking
- Abundant Natural Light
- Operable Windows
- Front and rear patio space
- Two Kitchenettes with Stove and Cooktops
- Self Contained HVAC
- 91 Walkability Score, Walker's Paradise
- Easy Access to Olympic Boulevard, Metro Rail, 10 Fwy and PCH

## PREMISES

3rd Floor  
± 4,200 SF

## RENT

\$6.00/SF, MG

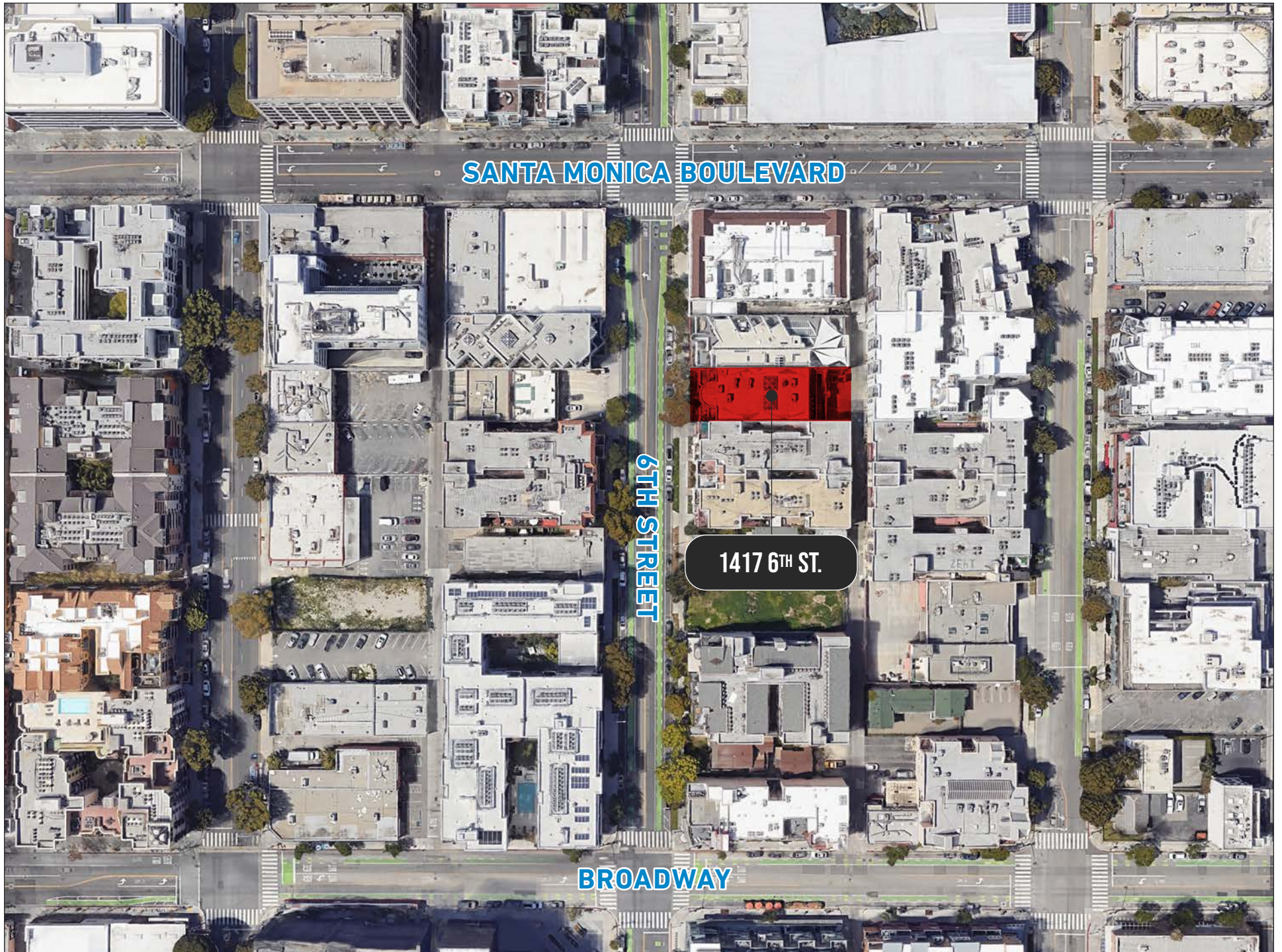
## OCCUPANCY

Immediate

## PARKING

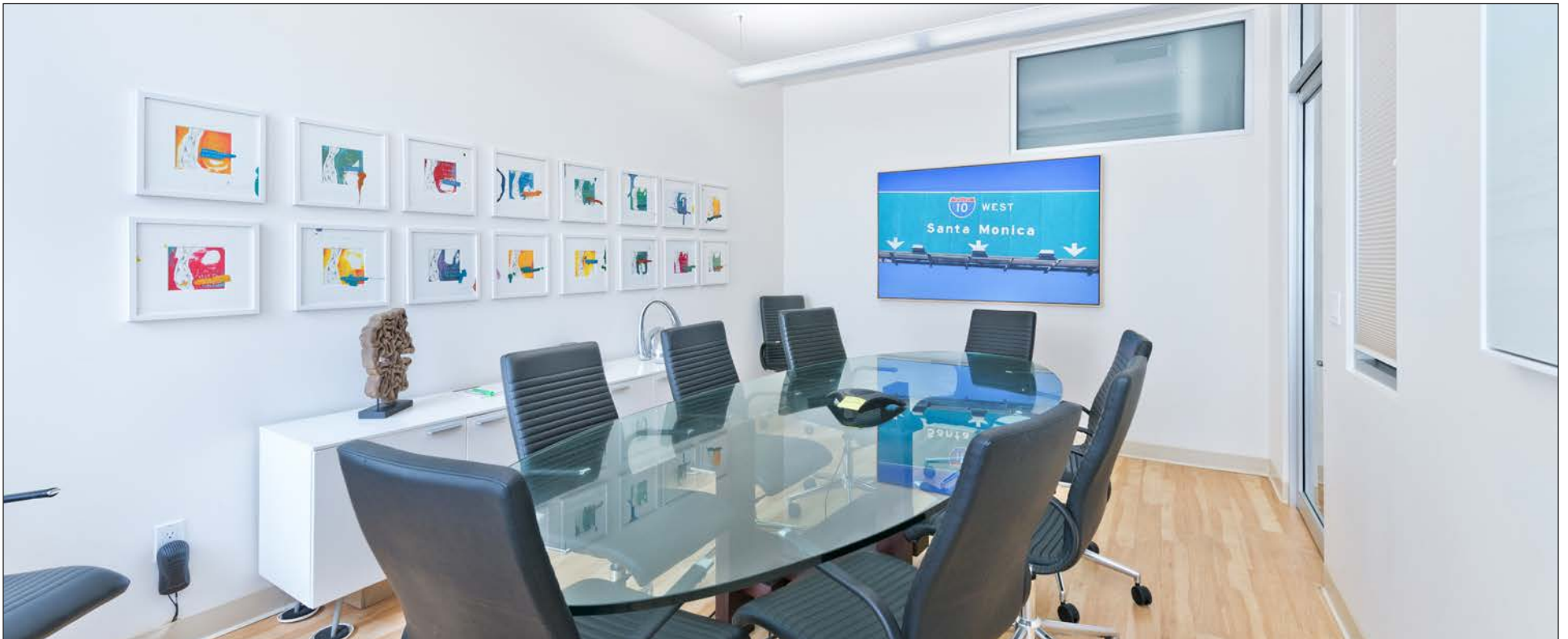
16 Spaces  
\$200/Space/Month







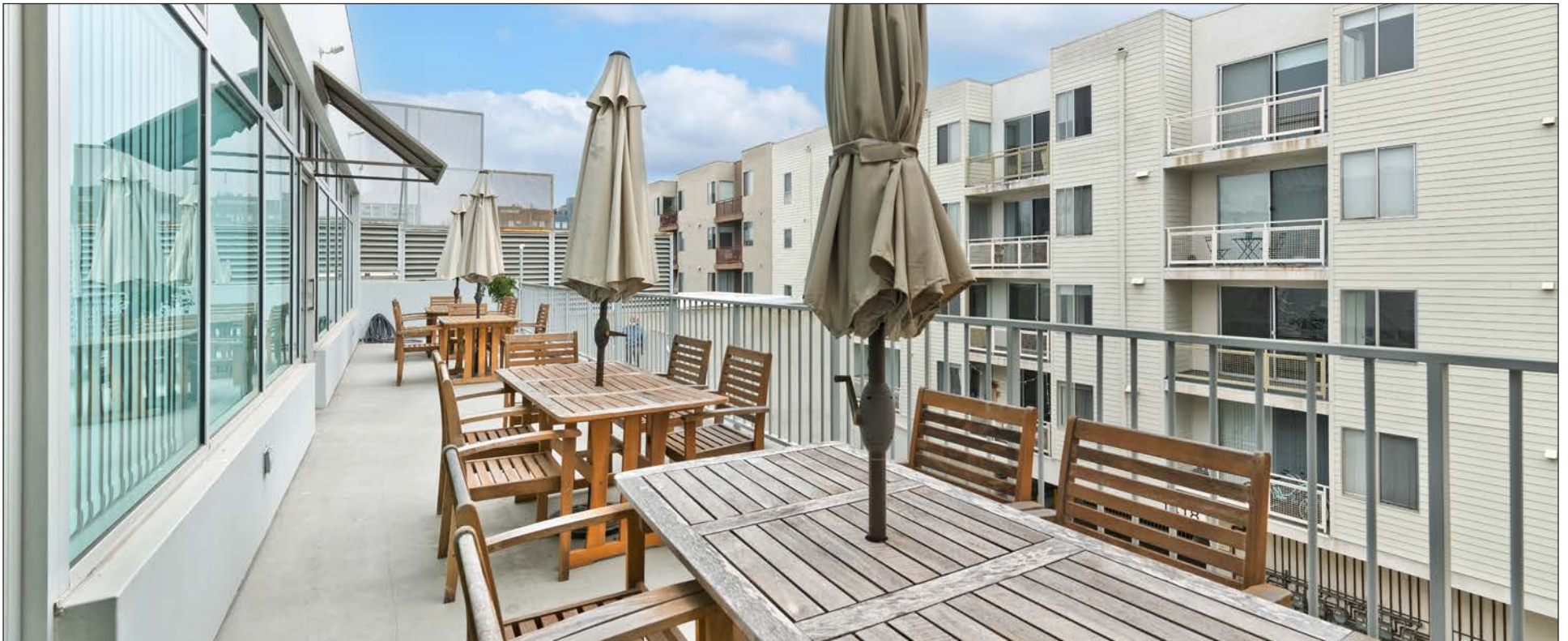












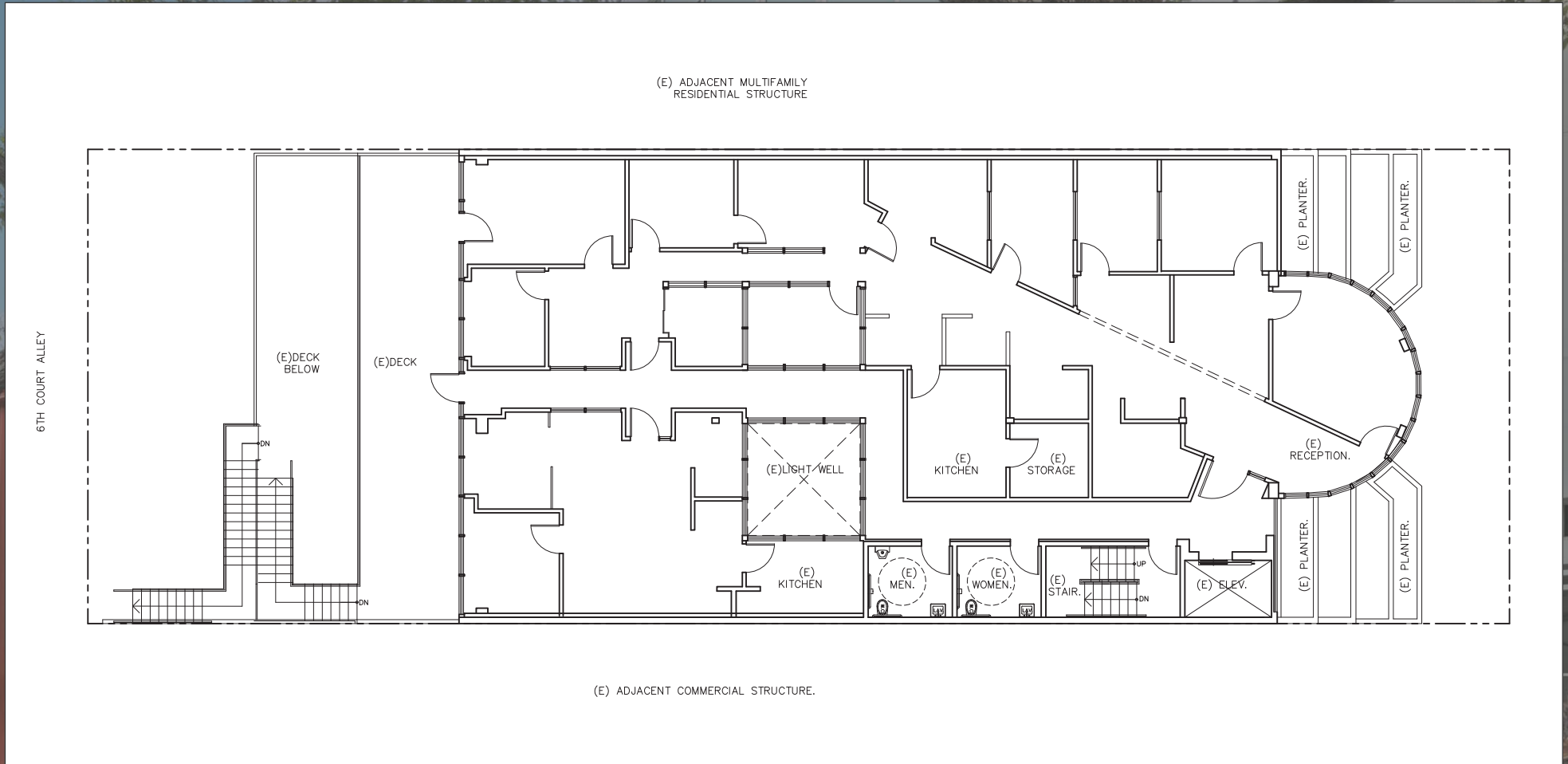


**PRIVATE GATED PARKING EXCLUSIVE  
FOR THE 3RD FLOOR SUITE**



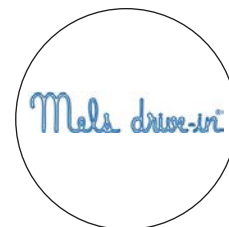
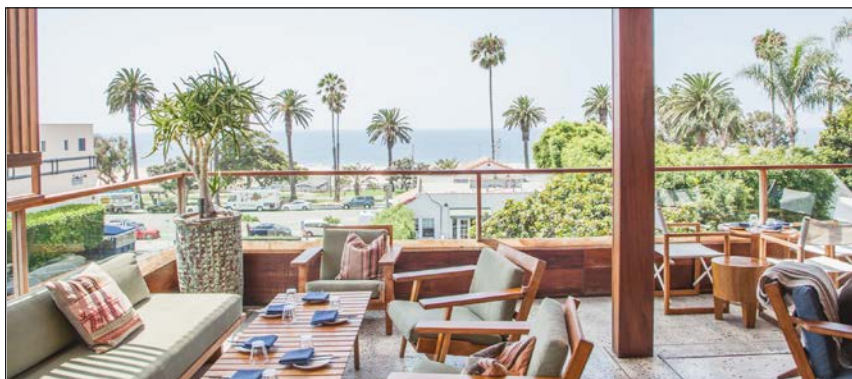
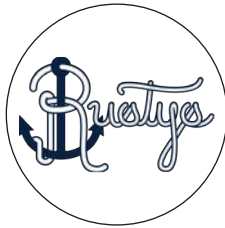


# FLOOR PLAN





# AREA AMENITIES





# AREA AMENITIES





# CONTACTS



**FOR LEASE**

**Page 12**