

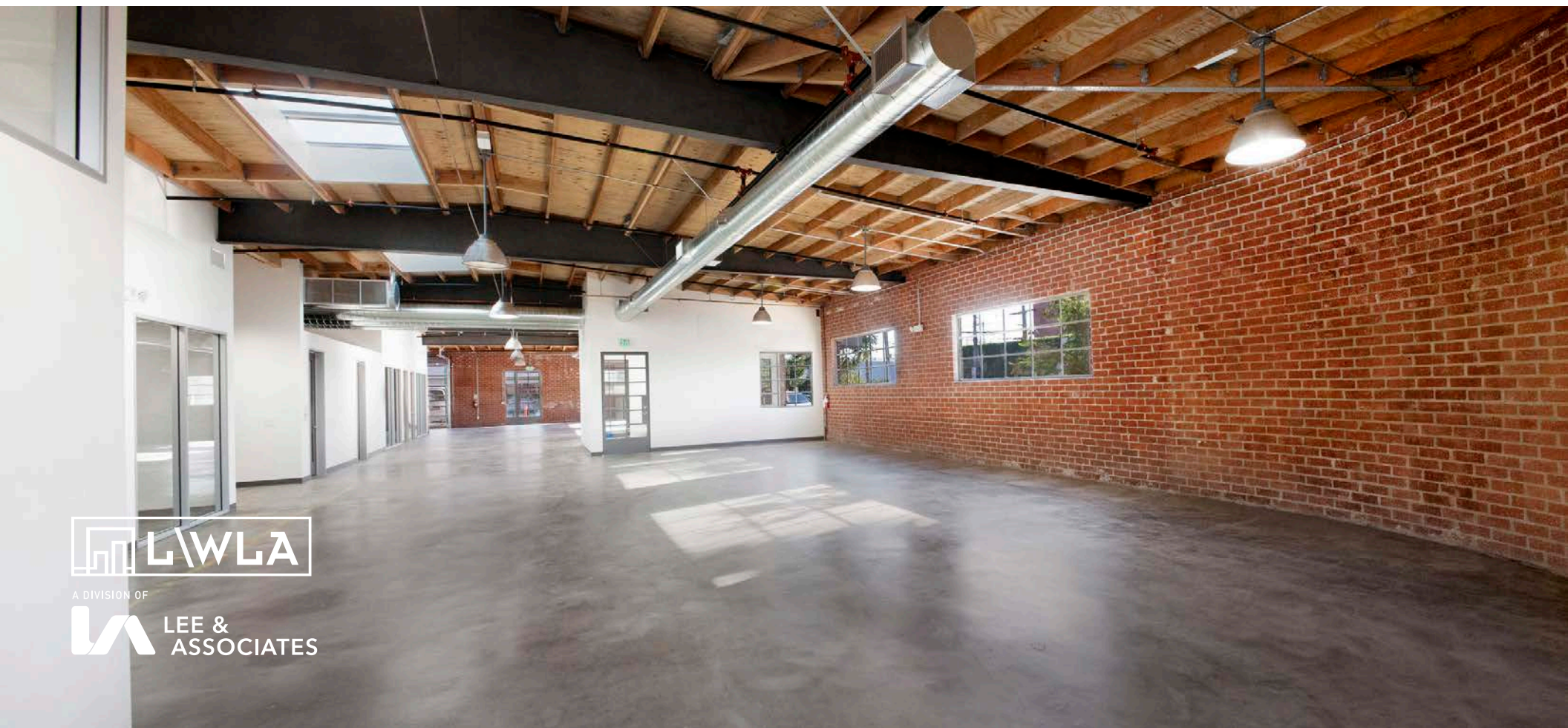
# STANDALONE CREATIVE OFFICE BUILDING FOR LEASE

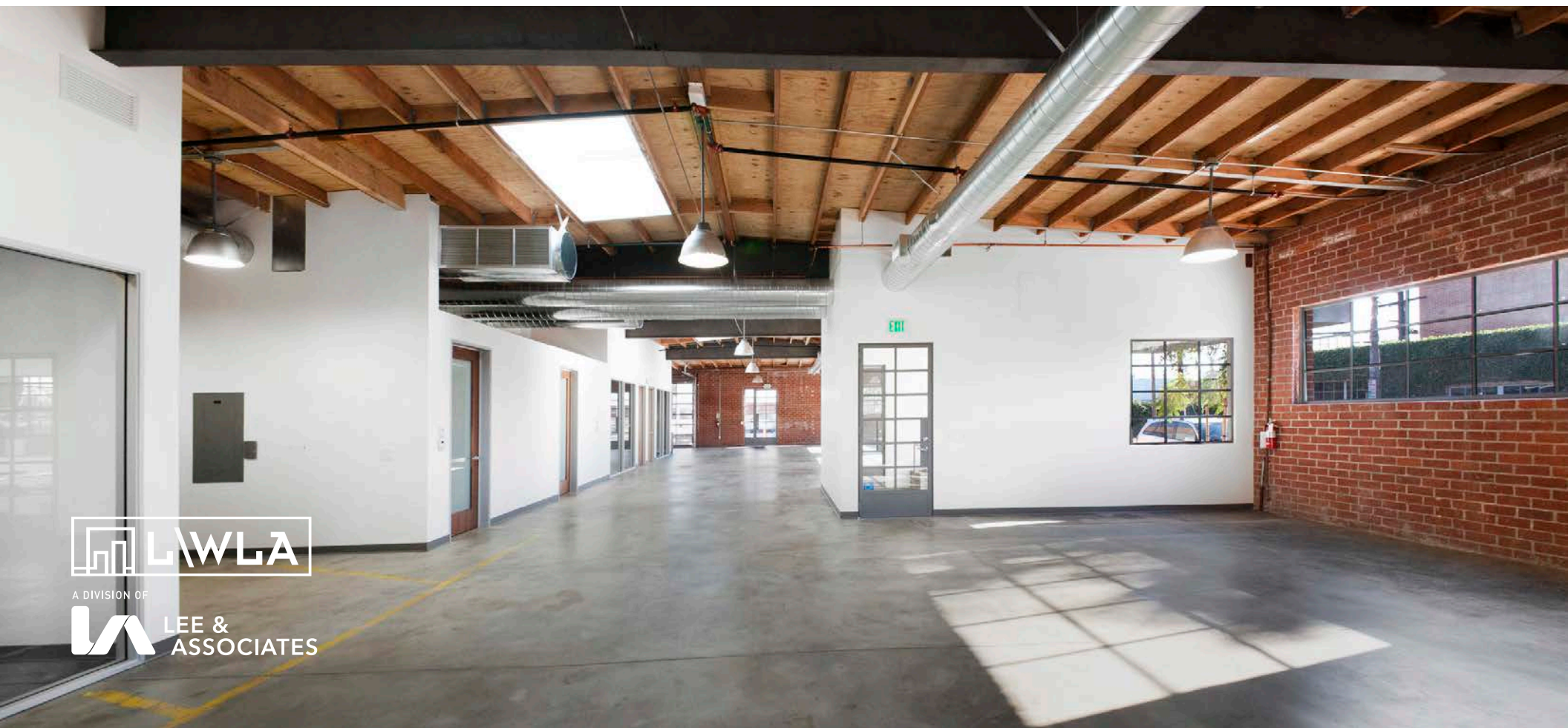
± 5,600 SF

3003 PENNSYLVANIA AVE  
SANTA MONICA, CA 90404

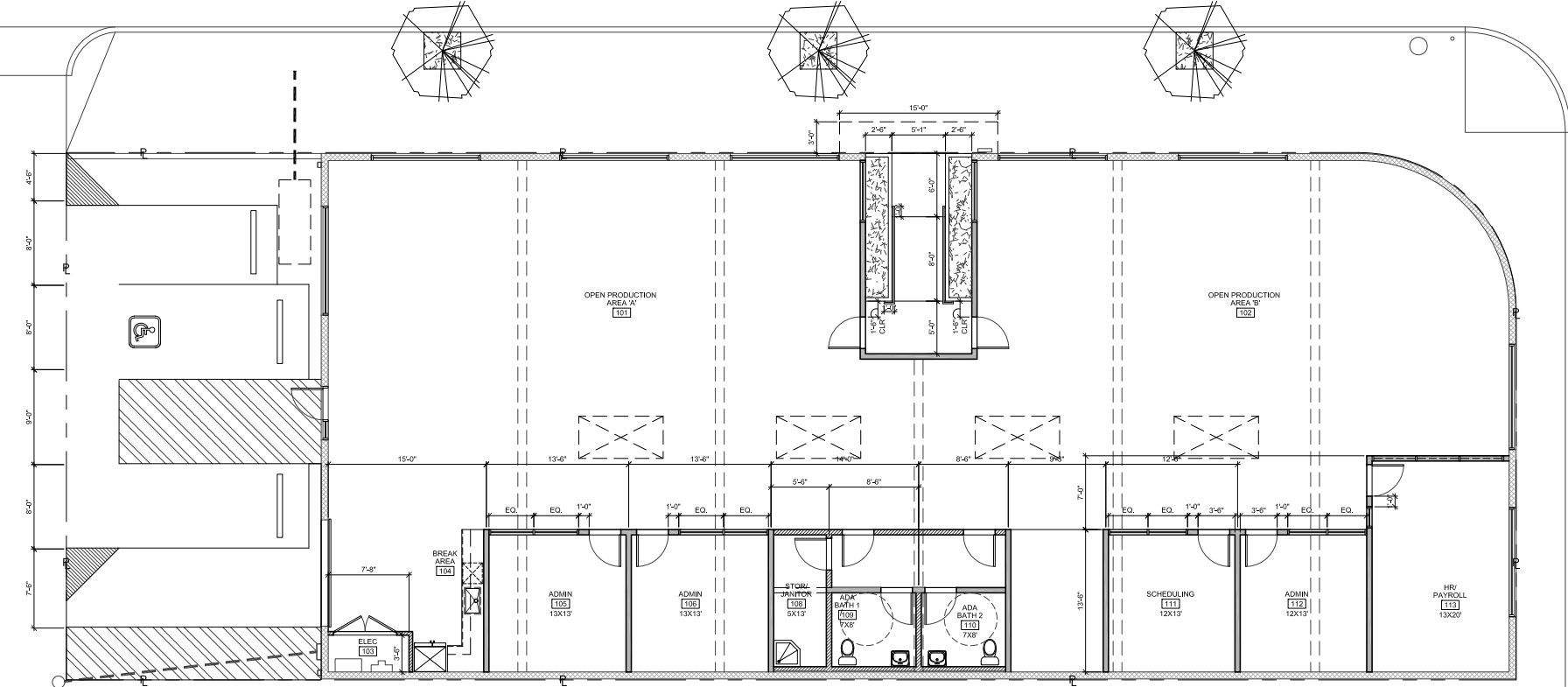








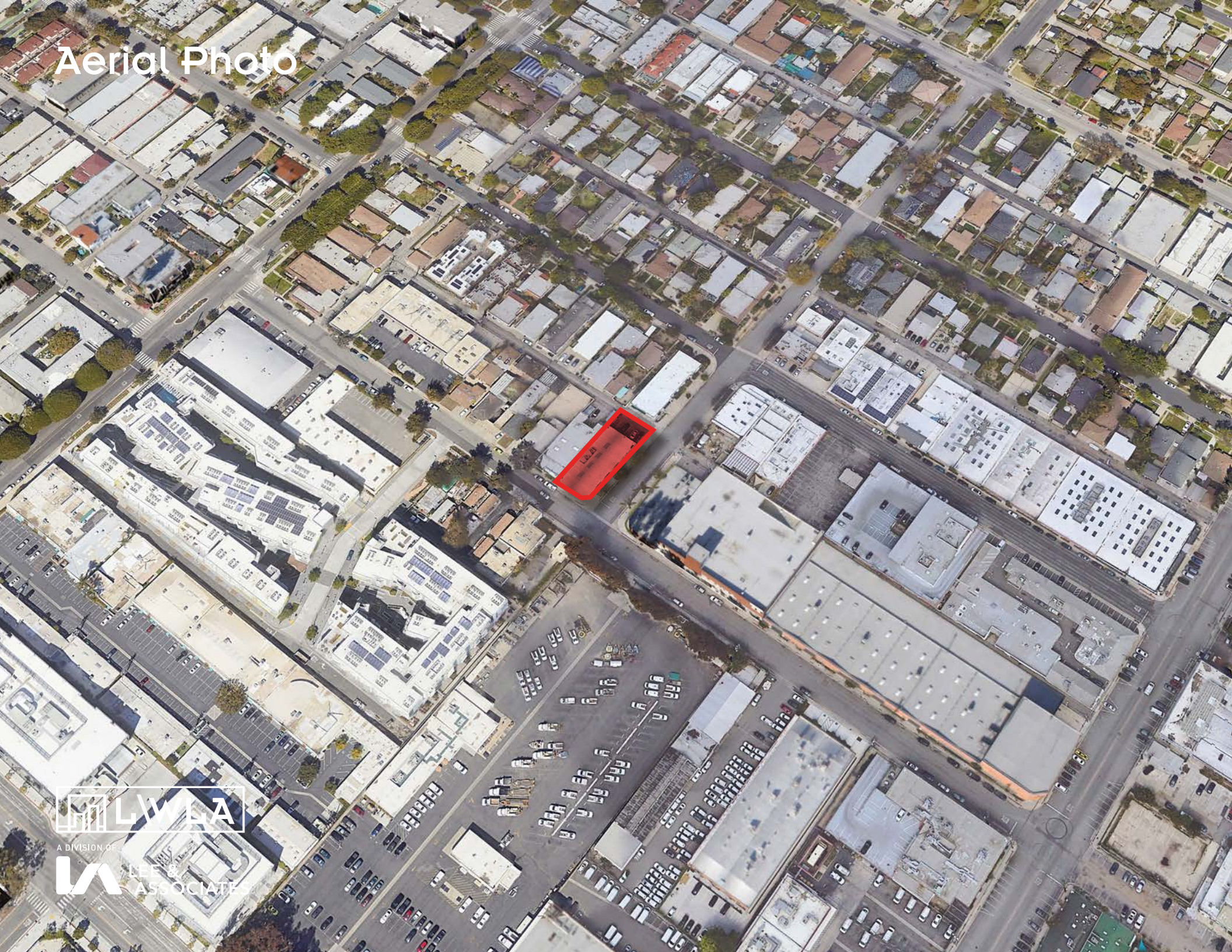
# Floor Plan



A DIVISION OF



# Aerial Photo



A DIVISION OF  
LWA & ASSOCIATES





**Aleks Trifunovic, SIOR**

President

310.899.2721

[atrifunovic@leewestla.com](mailto:atrifunovic@leewestla.com)

BKR DRE 01363109

**Tommy Isola**

Principal

310.899.2709

[tisola@leewestla.com](mailto:tisola@leewestla.com)

AGT DRE 01974024

**Keith Fielding**

Principal

310.899.2719

[kfielding@leewestla.com](mailto:kfielding@leewestla.com)

AGT DRE 01729915

**Tibor Lody, SIOR**

Principal

310.899.2720

[tlody@leewestla.com](mailto:tlody@leewestla.com)

AGT DRE 01261129

**Mallory Moore, CCIM**

Associate

310.899.2718

[mmoore@leewestla.com](mailto:mmoore@leewestla.com)

AGT DRE 02030584

**Adam Levine**

Associate

310.899.2703

[alevine@leewestla.com](mailto:alevine@leewestla.com)

AGT DRE 02104830

Lee & Associates Los Angeles West, Inc.  
1508 17th Street, Santa Monica, CA  
310.899.2700 | [www.leewestla.com](http://www.leewestla.com) | DRE 01222000

No warranty or representation is made to the accuracy of the foregoing information.